

---

# features

©2009 by Robert H. Leos. December 2009, V. I, No. 2

## Kingsville, Texas

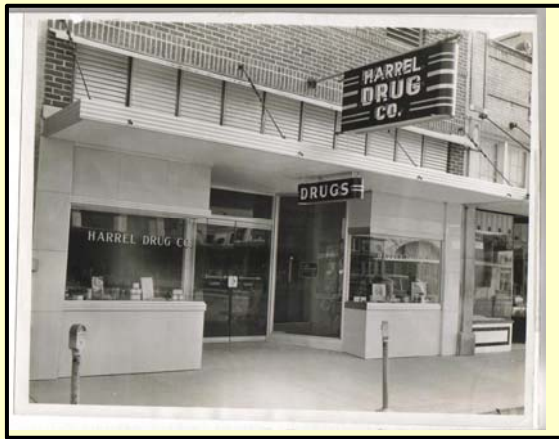
**K**ingsville, Texas is probably best known as the headquarters of the world-famous King Ranch, home of “los Kineños,” and birthplace of the Santa Gertrudis cattle. The history of the King Ranch is rich. It’s filled with the legacy of Richard King, an adventurer and entrepreneur who saw the potential for cattle ranching on this vast stretch of south Texas land. Kingsville is also home to Texas A&M University-Kingsville, is situated just 45 miles from Corpus Christi, 15 miles from Baffin Bay, and is home to Harrel’s Kingsville Pharmacy, a pharmacy with its own rich history. See more of each of these features using the links that I provide on page 4. [↗](#)



***The King Ranch Saddle Shop is a shopper’s paradise. One can find a vast array of shirts, leather bags, books detailing life on the King Ranch, and, of course, saddles.***

# Harrel's Kingsville Pharmacy

**F**or the past twenty-five or thirty years, my dad, Dr. Jesse Leos, has met his friends at Harrel's Kingsville Pharmacy for breakfast, lunch, or mid-afternoon coffee. Everyone knows each other at Harrel's. Politicians, doctors, lawyers, and retirees all call Harrel's their meeting place. The food is good, inexpensive, and always prepared to your liking. Only customers who are new to Harrel's use the menu and the wait staff usually already know what the regulars will order. When October rolls around, Winter Texans from the Rio Grande Valley make the two-hour trip to Kingsville to enjoy the Saddle Shop and indulge in some lunch and dessert at Harrel's. 🍷



***Founded in 1916, Harrel's is now run by pharmacist Nick Harrel III (bottom right). In addition to the long tradition of serving Kingsville's pharmacy needs, Harrel's Pharmacy boasts an extensive gift shop and serves as an important community meeting spot. Dr. Leos (yellow shirt) celebrated his 92<sup>nd</sup> birthday with friends at Harrel's on August 6, 2009.***

# Texas A&M University-Kingsville



***Bronze sculpture at the entrance to Texas A&M University-Kingsville.***

***Population 6,200.***

## **Texas A&M University-Kingsville**

According to its website, Texas A&M University-Kingsville grew out of the teacher college or “normal school” movement that swept Texas and the nation in the early 1900s. The school was chartered in 1917 but not opened until after WWI in 1925. The university began as South Texas State Teachers College and changed to Texas College of Arts and Industries in 1929. The name changed again in 1967 to Texas A&I University. After becoming a member of the Texas A&M system, the name changed once again in 1993 to Texas A&M University-Kingsville. 🐾



**Visit**

**[www.robertleos.com/Juarez.pdf](http://www.robertleos.com/Juarez.pdf)  
for an interview with Dr. Rumaldo Juárez, former president of Texas A&M University-Kingsville.**



**. . . and more on Kingsville and the surrounding area**

**KING RANCH**

[http://www.king-ranch.com/visit\\_museum.html](http://www.king-ranch.com/visit_museum.html)

**TEXAS A&M UNIVERSITY-KINGSVILLE**

<http://www.tamuk.edu>

**HARREL'S KINGSVILLE PHARMACY**

<http://harrels.com>

**BAFFIN BAY**

<http://www.baffinbaytx.com/>



<b>ROBERT LEOS, Ph.D. Consulting Services</b>	<b>FEATURES</b>
<p data-bbox="402 1402 602 1432"><b>Advisory Services</b></p> <ul data-bbox="228 1451 602 1570" style="list-style-type: none"><li>• Policy Analysis</li><li>• Strategic Planning</li><li>• Editorial Review</li><li>• Executive Training, Texas Process.</li></ul> <p data-bbox="378 1585 626 1614"><b>Research &amp; Evaluation</b></p> <ul data-bbox="228 1633 769 1780" style="list-style-type: none"><li>• Texas-based HUB</li><li>• Knowledge of Texas Educational System</li><li>• Experience in focus groups and field research; case studies.</li><li>• References on request.</li></ul>	<p data-bbox="997 1423 1248 1583">P.O. Box 92006 Austin, Texas 78709-2006 512-914-5998 Phone 512-892-1781 Fax <a href="mailto:robert@robertleos.com">robert@robertleos.com</a></p> <p data-bbox="980 1606 1265 1665"><b>Find us on the Web:</b> <a href="http://www.robertleos.com">http://www.robertleos.com</a></p> <p data-bbox="837 1717 1409 1780">©2009 by Robert Leos. Photos by Robert Leos except B&amp;W photo of Harrel's Pharmacy. Used with permission.</p>